



GAT MONTHLY MEMBERSHIP PROGRESS REPORT

Results as of: 12/31/2021

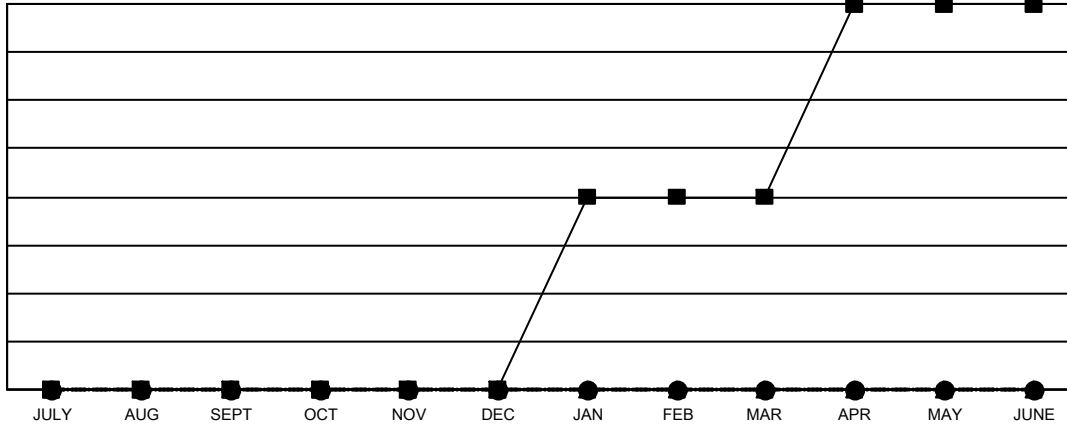
Multiple District 36

LOCATION: OREGON

Clubs			
RESULTS FOR 2021-2022			
QUARTER	NEW CLUB GOAL	NEW CLUBS	DROPPED CLUBS
JULY/AUG/SEPT	0	0	2
OCT/NOV/DEC	0	0	0
JAN/FEB/MAR	2	0	0
APR/MAY/JUNE	2	0	0

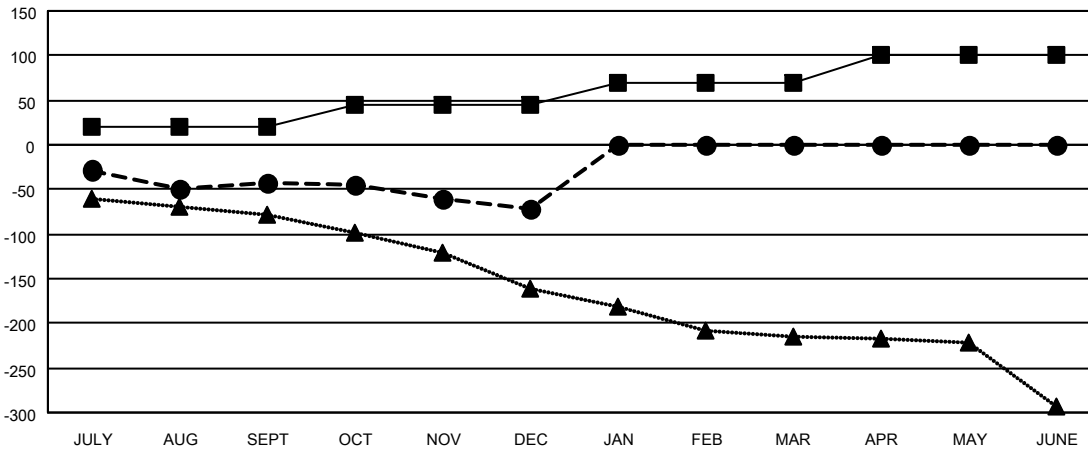
Members			
RESULTS FOR 2021-2022			
QUARTER	MEMBER GROWTH NET GOAL	MEMBER GROWTH ACTUAL	DROPPED MEMBERS ACTUAL (including transfers)
JULY/AUG/SEPT	20	97	121
OCT/NOV/DEC	25	90	106
JAN/FEB/MAR	25	0	0
APR/MAY/JUNE	31	0	0

GOALS AND ACTUAL NEW CLUBS CUMULATIVE



- CURRENT YEAR GOALS FOR NEW CLUBS
- CURRENT YEAR ACTUAL NEW CLUBS
- ▲- LAST YEAR ACTUAL NEW CLUBS

GOALS AND ACTUAL MEMBERS CUMULATIVE



- MEMBER GROWTH NET GOAL
- MEMBER GROWTH ACTUAL
- ▲- LAST YEAR MEMBERSHIP ACTUAL

DROPPED CLUBS: 2	40 CLUBS OF 130 ADDED 1 OR MORE NEW MEMBERS	GENDER DISTRIBUTION
DROPPED MEMBERS	CLICK HERE FOR CUMULATIVE MEMBERSHIP DATA	MALE 1,718 (59.43%)
DECEASED 36		FEMALE 1,172 (40.54%)
CLUB CANCELLED 11		NON BINARY 1 (0.03%)
OTHER 180		PREFER NOT TO ANSWER 0 (0.00%)
TOTAL 227		TOTAL FAMILY UNIT MEMBERS 748
		FAMILY MEMBERS PAYING HALF DUES 382